

# Early Agricultural Period Irrigation in Southern Arizona

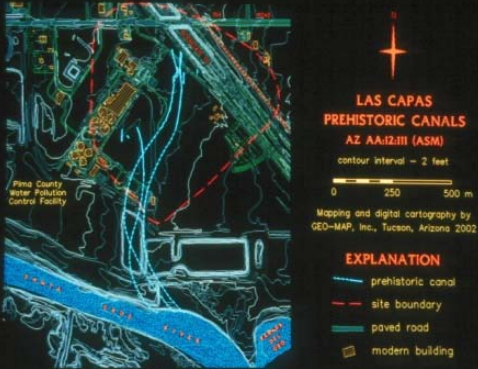


Figure 1. Location map.



Figure 2. Agricultural fields and irrigation canals.



The history of prehistoric irrigation during the Early Agricultural Period (1200 BC – AD 50) is well represented in Las Capas (site AZ AA:12:111 [ASM]), Tucson, Arizona. For over 20 years, TNESR has devoted most of its efforts to assist archaeologists in understanding the human-environment relationship in the State of Arizona.

## Stratum 504.02

## Feature 42

## Period: 900-800 BC

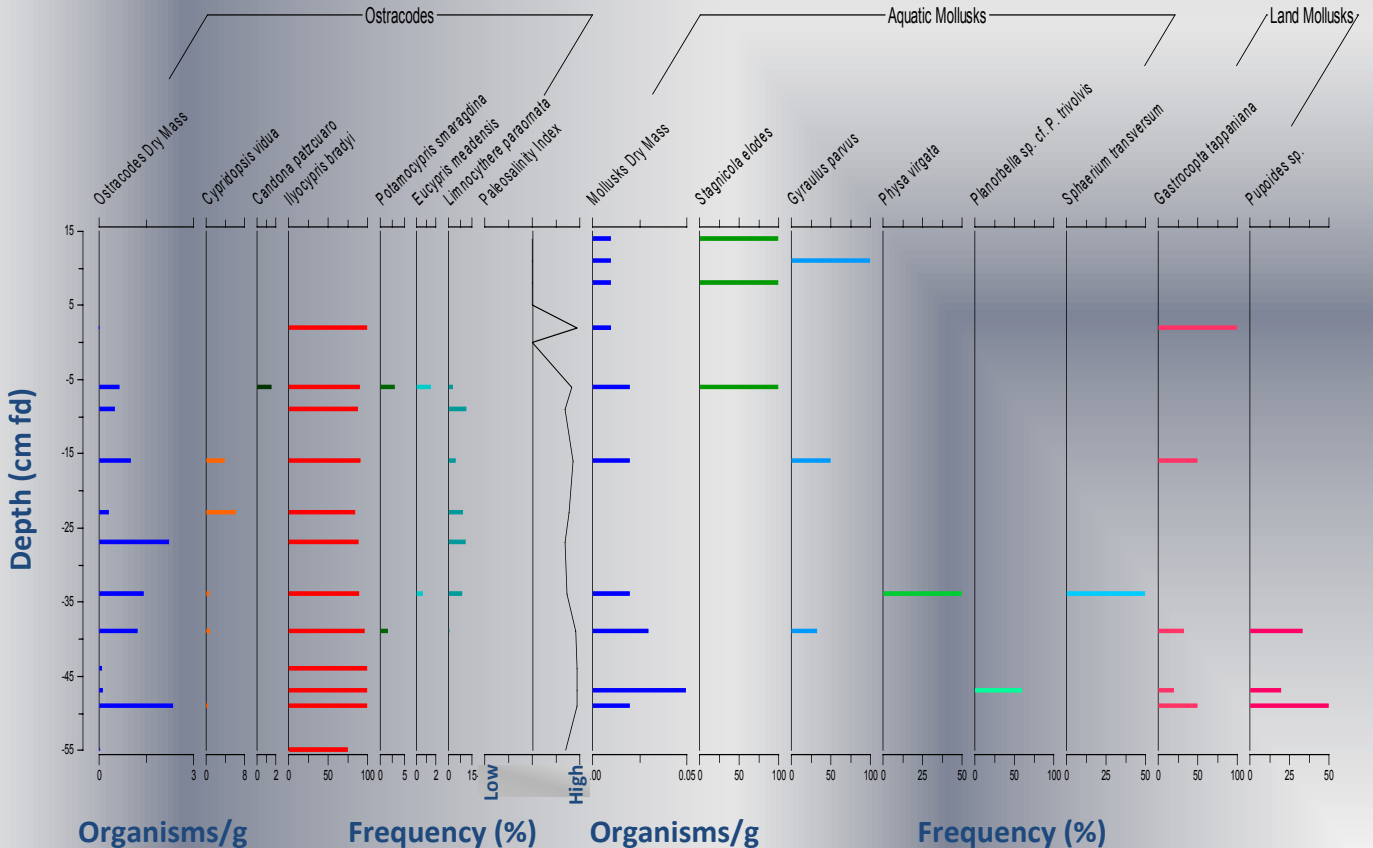


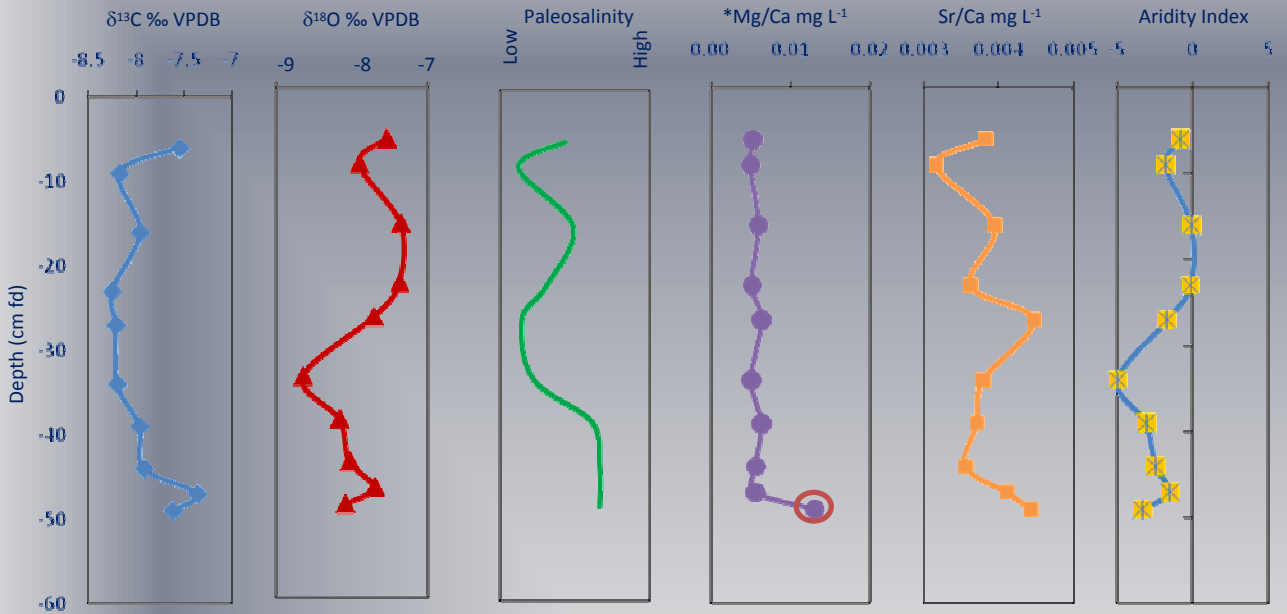
Figure 3a. Paleoenvironmental history of water management.

# Las Capas (Site AA:12:753 [ASM]), Tucson, Arizona

Stratum 504.02

Feature 42.02

Period: 900-800 BC



\* Mg/Ca value at the base of Feature 42 may be an outlier (red circle).

Figure 3b. Stable isotope and trace elements shell chemistry signature from *Ilyocypris bradyi* as recorded at Feature 42 (a main irrigation canal). The paleosalinity index is derived from Figure 3a. The aridity index is the ratio between  $\delta^{18}\text{O}$  VPDB and Sr/Ca ( $\text{mg L}^{-1}$ ).